

January 26, 2020

Unit # 020525

[View complete email in your browser](#)

Our mission is to support the education, health, and welfare of each and every child at Somerset Elementary School. As part of the Washington State PTA, we are a nonprofit membership association bringing together the home, school, and community on behalf of our children.

Please Note: This newsletter may be truncated by your email program. Please click [VIEW ENTIRE MESSAGE](#) at the bottom or top to read the full newsletter.

PTSA NEWS

PTSA / School Calendar - Upcoming Dates and Events

THIS WEEK

- Monday, January 27th - Professional Development Day - No School
- Friday, January 31st - Passport Check Day
- Friday, January 31st - 6:00 - 8:30pm - Pizza & Bingo Night

UPCOMING

- Friday, February 7th - Birthday Lunch with Principals
- Friday, February 14th - 6:30 - 8:15pm - Movie Night
- Monday, February 17th - Friday, February 21st - Midwinter Break

LOOKING AHEAD

- Friday, February 28th - Passport Check Day

- Friday, February 28th - Family Dance Night
- Friday, March 6th - Birthday Lunch with Principals
- Friday, March 20th - Snow Make-up Day
- Wednesday, March 25th - Staff Appreciation Day
- Friday, March 27th - Passport Check Day
- Friday, March 27th - STEM Poster Exhibition

[**VIEW THE COMPLETE SOMERSET PTSA CALENDAR**](#)

Coronavirus Information

As the Somerset PTSA we have received many messages from concerned parents about the recent outbreak of the Coronavirus and the first reported case in WA state. We would like to reiterate the information principal Judy Bowlby shared with you last week:

Below is the information, in bold, that was distributed by BSD's Director of Special Education, Health Services. The information came directly from the Department of Public Health regarding the virus in Washington State.

Coronavirus symptoms include a runny nose, cough, sore throat, possibly a headache and maybe a fever, which can last for a couple of days.

For those with a weakened immune system, the elderly and the very young, there's a chance the virus could cause a lower, and much more serious, respiratory tract illness like a pneumonia or bronchitis.

Prevention of spread of the 2019-nCoV virus (and other respiratory viruses) includes:

- **Handwashing (soap and water scrub for at least 20 seconds is best)**
- **Covering coughs and sneezes**
- **Disinfecting surfaces that many people touch**
- **Staying home when sick**

As a district we take safety very seriously. At Somerset we will continue to encourage more frequent handwashing throughout the school day. This a good practice for home, as well. Our PTSA is placing hand sanitizer stations throughout the school for student, staff, and visitor use. This is also flu season, so an opportune time for a reminder about health care practices.

At this time, we have no district policy against students wearing surgical or similar face masks to school, however, these masks do have a limited efficacy in preventing the spread of respiratory viruses.

Please use your best judgement when sending your child to school. If they appear sick and/or are running a fever, please allow them to stay home and rest. Bellevue School District Policy states that students, after an illness, must be fever free for 24 hours (without fever reducing medication) before returning to school.



Pizza & Bingo Night 2020

Pre-order pizza dinners by January 27th!

Friday, January 31st from 6:00 - 8:30pm

All families and friends are welcome so bring everyone for a fun night of Bingo! Bingo cards will be on sale at the event for \$1 per card (3 games on a card). Cash only for Bingo Cards. Don't forget to bring in your vouchers you may have won at the Maker Mall event to trade it in for one free Bingo Card.

Pizza dinners are ready for pre-order online [HERE](#). **Pizza dinners must be pre-ordered no later than Monday, January 27th!**

We need volunteers! Please consider volunteering at this fun event. We need many hands throughout the night to make this big event happen. You can sign up [HERE](#). Your high school

students are welcome to volunteer. They will receive credit for volunteer hours in community services for this event.

Please contact Andrea Wohlan at somersetpta@gmail.com with any questions.

Passport Club



Thank you to all the volunteers who came out to help with the December Passport Club session and the wonderful students who came by to test their knowledge. Our next check will be on **Friday, January 31st**. Here is the link to sign-up or to view the testing dates and times: <https://signup.com/go/nHeNDwt>

Thank you for supporting Passport Club!

Movie Night - Showing "Pets 2"

Friday, February 14th
from 6:30 - 8:15pm

Somerset students, family and friends are invited to attend the PTSA's third movie night of the school year.

Bring a blanket, a folding chair, or a pillow—whatever makes you feel comfortable.

Admission is free, Doors open at 6:15pm.

Popcorn and other concessions will be available for purchase.

Adults must stay with their children-this is not

a drop-off event.



Volunteers Needed!



Fifth Grade Activities - Recruiting Parent Volunteers!

If you are a parent of a 5th grader this year, please consider volunteering for the planning and preparation of the many events we have planned to celebrate your student's time here at Somerset. Please sign up for a committee [HERE](#) and the committee chair will be in contact with you shortly on next steps.

Questions? Please contact Emilie Castle at emiliecastle@gmail.com.

Field Day Chair

If you love Field Day as much as the students love it or want to make sure that the students will not miss out on one of their favorite events, please consider chairing or co-chairing with another parent/friend. Field is scheduled to take place June 12th (1:30 - 3:30pm).

For more info and questions please email somersetpts@gmail.com.

Somerset students, family and friends are invited to attend our very first PTSA **Family Dance Night**. Please join us for fun evening of dance, music, and games. We will have a DJ, board games and a photo booth for a memorable evening. Dress for a fun dance night. Pizza will be available for pre-order. More information on how to pre-order will be posted in the eNews soon.

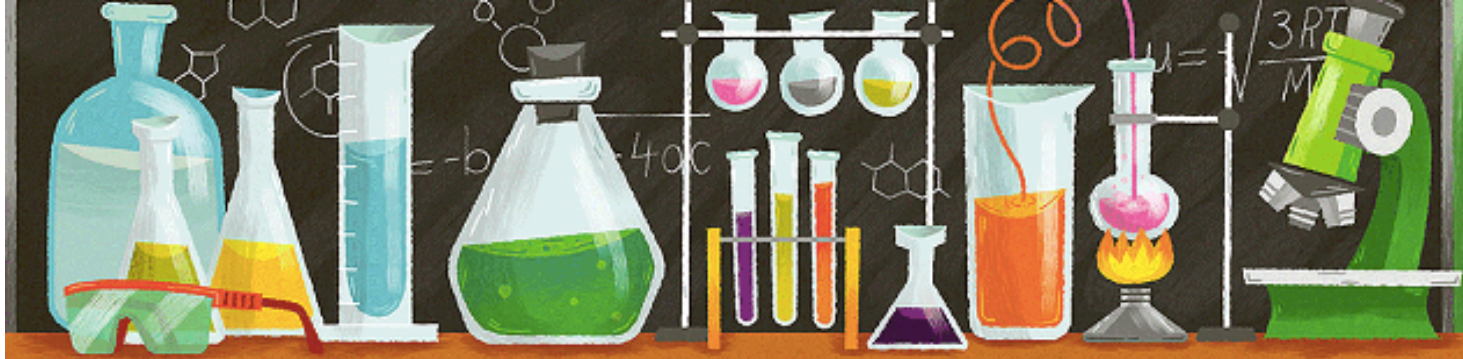


Family Dance Night

Friday, February 28th from 6:30 - 8:15pm

Doors will open at 6:30pm. Adults must stay with their children - this is not a drop-off event.

We welcome Somerset parents to be line dance volunteers. Sign up [HERE](#).



STEM Poster Exhibition

Friday, March 27th from 6:00 - 8:00pm

The STEM Poster Exhibition is a celebration of student STEM projects! All students are highly encouraged to do a project. At the event students will display their poster/project, talk to high school volunteers, and receive a certificate.

A packet of info including a project .ppt template is available here: [HERE](#)

Register your project [HERE](#).

The PTSA will sell a limited quantity of 36"x48" tri-fold project boards and deliver them to classrooms. Order online [HERE](#).

Questions? Contact SomersetSTEM@gmail.com

Yearbook Photos Needed!

Thank you to everyone who has sent in pictures to share so far! There is still a lot of space for candid photos in the yearbook, and we would like to capture all of the fun things that happened this year. If you have photos you would like to share, please do!

If you can help, here are some examples of photos we are looking for:

- Classroom/grade events (parties, field trips)
- Book Fair, Maker Mall
- Upcoming Twin Day, Math Adventure, and Pizza & Bingo Night, etc.

You also still have time to send in a baby picture of your 5th grader.

Please email photos to yearbooks.somerset@gmail.com

SCHOOL NEWS

Supply Drive For Eastside Baby Corner

From February 3rd to February 14th, the Somerset Elementary Student Council will be organizing a supply drive to help babies and young children on the Eastside. We're asking Somerset families to consider donating new or lightly used baby supplies to help those youngest members of our community who are in need. Blanket sleepers, winter clothes, baby safety items, and hygiene products are especially needed. All donations will go to **Eastside Baby Corner**, an Issaquah based organization that collects community donations and distributes children's and maternity items to families in collaboration with organizations helping families in our area. You can bring your donations here to school. There will be drop off bags in all teachers' classrooms for any donated items. Thanks so much for your generosity!

BELLEVUE SCHOOLS FOUNDATION

Program Choices for High Quality Education

Tuesday, January 28th from 11:30am - 1:00pm

The Community Engagement Committee would like to offer a lite lunch and program to educate parents about the different programs as well as the differences between programs that are available for Bellevue School District middle and high school students. This is a great opportunity to get all the information you need about the following programs in one place.

- AP (Advanced Placement),
- IB (International Baccalaureate),
- AVID (Advancement Via Individual Determination),
- CTE (Career and Technical Education),
- WANIC (Washington Network for Innovative Careers),

- Running Start, and
- College in the High School

Representatives from these programs will be available after the program to help with any questions you might have.

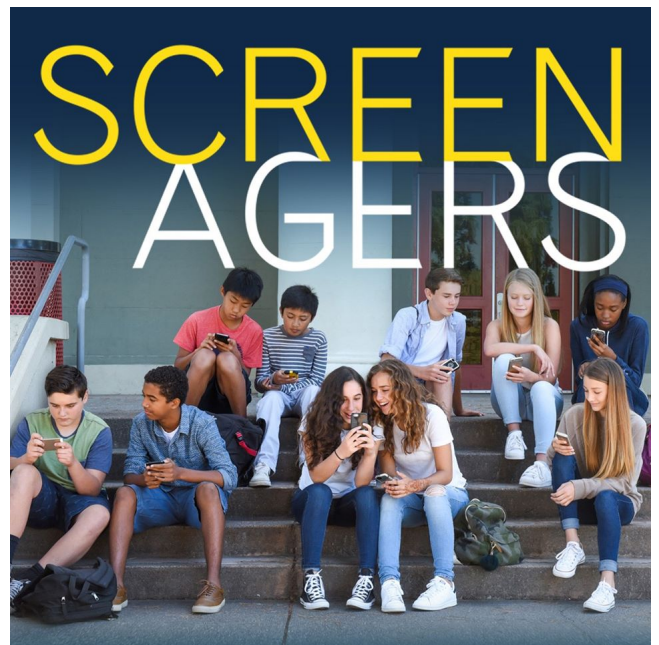
Event location: Rainier Room at WISC.

To register, go to <https://tinyurl.com/urolwjl>.

Screenagers: Next Chapter

Thursday, February 6th at 6:15pm

In case you missed our last showing, the Bellevue Schools Foundation and the Chinook Middle School PTSA, Enatai Elementary PTSA & International School PTSA invite you to join us February 6th at 5:15pm, for a special screening of the new documentary *Screenagers: Next Chapter*. Film will be shown at Chinook Middle School Commons. After the film there will be a brief panel discussion.



Filmmaker and physician Dr. Delaney Ruston takes the conversation around screens and teens to the next level with *Screenagers NEXT CHAPTER: Uncovering Skills for Stress Resilience*—a film that examines the science behind teen’s emotional challenges, the interplay of social media, and most importantly, what can be done in our schools and homes to help them build crucial skills to navigate stress, anxiety, and depression in our digital age.

Admission is free and open to the public. Advance registration is requested.

Register at <https://tinyurl.com/yxywynsx>.

(All News in this section are NOT sponsored by the Somerset PTSA. As a service to the community, the PTSA helps to publicize these programs in the eNews.)

School Bond Election, February 11th – Please Vote!

Bond Details:

Provides students high-quality learning spaces by replacing aging school buildings and adding classrooms and student support spaces:

- Replaces Big Picture School, International School and Jing Mei Elementary.
- Builds additions for and renovates Newport and Interlake High Schools.
- Provides modern learning spaces for science, technology, engineering and math classes to prepare students for the future.
- Continues the district's work to provide modern learning environments so every student can be successful.

Increases safety and security for students and schools.

Adding security vestibules to eight schools that currently do not have them:

- Visitors enter the vestibule before entering the main school area.
- Next, they are required to enter the office to check in before gaining access to the rest of the building.
- The set of doors between the vestibule and the school remain locked and only open out.

Adding safety posts in front of 19 school entrances that do not have them:

- One of the most important areas of a school to protect is the entrance.
- Fitting the entrance and exit points with fixed bollards protects them from potential vehicle impact, protecting students, staff and families inside and around the doorway.

Replaces the aging education service centers:

- Invests in modern facilities to allow central office staff and administrators to better support students, teachers and the community.
- Reduces the costs of maintaining aging buildings and increases building efficiency.

Designates funding to purchase property for future school locations.

- Allows a faster response by the district if appropriate property becomes available.
- Enables the district to plan for the future as our community continues to grow.

What Will the Capital Bond Cost?

- If approved, the local tax rate for our schools increases by \$0.03 per \$1,000 of assessed value an increase of less than 1 percent.
- For the average valued home of \$850,000, a Bellevue resident currently pays \$2.43 per \$1,000 of assessed property value.
- With the proposed bond, that will increase by 3 cents a year, or \$2.46 per \$1,000 of assessed property value, or \$25.50 per year for the average valued home.
- All voter-approved funding stays in our school district to benefit our Bellevue students. Major construction projects are not funded with state dollars, but instead rely on these funding measures.

For more information about the bond, please visit the website: www.BellevueQualitySchools.org

Facebook and Twitter: www.facebook.com/BellevueKidsFirst and <https://twitter.com/BellevueQS>

Evergreen Transition Program

Students from the Evergreen Transition Program will be selling fused glass items (jewelry, plates, cheese plates, etc.) on **Friday, April 3rd from 10:30am - 1:00pm in room 106**. This is part of the students job training program, where they create the items by hand and then sell them throughout the year. Proceeds go to community-based activities for students in the Evergreen Transition Program. They take great pride in making, showing and selling their work, as well as learn valuable skills such as customer service, money skills, and vocational training skills. Please see attached pictures for some examples of items.



Camp Kindness Counts Mid Winter Break Camp

Camp Kindness Counts is inviting kids to help other kids in need living near and far through service projects and compassion. Join us as we practice, build on our character through team games, mindfulness and help kids just like us by working alongside impactful organizations such as Birthday Dreams and Sofia Way. Make Kindness your Superpower this mid-winter break!

Sign up here: <https://www.campkindnesscounts.org/2020-mid-winter-break-camp>

Also if you are interested in coming to our FREE Family Service Events our next one will be February 8th at Sunrise of Bellevue Senior Center (15928 NE 8th St, Bellevue, WA 98008). We will be playing games, doing crafts, and have a conversation with our senior friends.

Sign up here for our Family Service Events: <https://www.campkindnesscounts.org/service-events>

Directory / Links

Executive Committee

Co-President: Bonnie Lau and Christine Lee



Shop at Amazon log in [HERE](#) and select

Secretary: Sandhiya Kalyanasundaram
Co-VP Programs: Edith Ng and Yuki Yang
Co-VP Ways and Means: Emilie Castle
Co-Treasurers: Grace Yu and Yan Zhou
VP Communications: Andrea Wohlan

Somerset PTSA Email:

Somersetpts@gmail.com

Newsletter Submission:

Somersetpts@gmail.com

[Somerset PTSA Website](#)

[Somerset Elementary School Website](#)

[Lunch Menu](#)

'SomersetElementary PTSA' and AmazonSmile donates to Somerset PTSA. Or click <https://smile.amazon.com> for your purchase. The AmazonSmile Foundation will donate 0.5% of the purchase price from your eligible AmazonSmile purchases to our PTSA. Thank you very much for supporting our school and PTSA.



Follow us on Facebook



Visit our website